

Student Social Mobility Awards

Recognising Outstanding Achievement

#upReachSSMA
@up_Reach

House of Lords

13th December 2018



The upReach 2018 Student Social Mobility Awards

Schedule

6:30pm *Champagne, soft drinks and canapés will be served*

7:10pm *The formal part of the evening:*

Our Hosts: Fatima Benkhalel, upReach Associate and student at King's College London and Reggie Nelson, upReach Mentor.

Welcome Address: Baroness Helena Kennedy QC, Patron of upReach

Celebrating Success: Sasha Morgan, Director of the Social Mobility Commission

The Sector Awards: Recognising outstanding achievement in specific career sectors

The Value of Mentoring: Richard King, Co-Head of UK & Ireland Corporate & Investment Banking, Bank of America Merrill Lynch

Awards: For Best Mentor, Biggest Champion of Social Mobility and Highest Impact Employer and University Initiatives

Announcing The upReach Ten and The Outstanding Achievement Award

Access: Chris Millward, Director for Fair Access and Participation, Office for Students

7:50pm *After closing remarks from John Craven, Chief Executive of upReach, the Reception will continue until 8:30pm*

8:30pm *Carriages*





I am delighted to welcome you to the first ever Student Social Mobility Awards. Whether you are a student who was nominated, a sponsor of the event, an upReach partner or another interested stakeholder, thank you very much for your interest in the Awards and for taking time out of your busy December schedule to support the initiative.

Tonight is important because it showcases dozens of outstanding achievements, often achieved against the odds, overcoming barriers or difficult circumstances. The judging process has been designed to be thorough, independent and as free from bias as possible.

I gather it was incredibly tough to identify the shortlist for each award from over 200 nominees, let alone to select the winners.

While giving a glimpse of the enormous talent that exists in this country, it is a reminder that with social mobility in the UK still worse than in most other OECD countries, there is much unrealised potential that we need to tap. The challenge for all of us here is to redouble our efforts, to make sure we are doing whatever we can to ensure everyone has the opportunity to realise their career potential, regardless of social background. At upReach, we strongly believe that by working in close partnership with employers and universities, we can together transform social mobility. I would like to thank all of our partners and donors for their generous support.

John Craven

Chief Executive of upReach



In the Social Mobility Commission we are passionate about creating a fairer society where your background does not determine your future. However, we know that there is a long way to go – you are 70 per cent more likely to end up in a top professional job if one of your parents had one, compared to those whose parents were in routine or manual jobs. That is why we support initiatives like the Student Social Mobility Awards. This celebrates social mobility through recognising outstanding individuals who have overcome barriers and achieved exceptional results – not just for themselves, but for others too. Many have made a

hugely positive mark on society already.

Through this I hope we can inspire young people to follow their aspirations. I also hope these awards, and other great initiatives like them, encourage employers, universities and others to break down the barriers to social mobility. The newly launched Social Mobility Commission welcomes the opportunity to work across sectors to collaborate in our mission to improve social mobility. We look forward to working with all of you. Congratulations to all the amazing winners and shortlisted candidates in the awards. Your achievements are truly outstanding and inspire us all.

Dame Martina Milburn

Chair of the Social Mobility Commission



I know from first hand experience just how tough it can be to break into the professions if you don't come from the 'right background'. Far too many students from working class backgrounds still struggle to get placed at the most elite universities, and even those that do find they have another mountain to climb when it comes to getting a graduate job in the professions. upReach is doing all it can to level the playing field, and I'm delighted to be able to offer my support by hosting this event at the House of Lords. I hope that the remarkable students we are celebrating tonight will inspire others to succeed.

Baroness Helena Kennedy QC

upReach Patron



Every day is another chance to grow. What are you working for?

We're focused on having an inclusive workplace where all employees can be themselves, achieve personal success and contribute to the responsible growth of our company.

Get started. Apply now.
campus.bankofamerica.com

Bank of America
Merrill Lynch



Bank of America and its affiliates consider for employment and hire qualified candidates without regard to race, religion, color, sex, sexual orientation, gender, gender identity, age, national origin, ancestry, citizenship, protected veteran or disability status or any factor prohibited by law, and as such affirms in policy and practice to support and promote the concept of equal employment opportunity and affirmative action, in accordance with all applicable federal, state, provincial and municipal laws. © 2018 Bank of America Corporation. Campus-032118

Judging Panel

Our independent judging panel comprises leading representatives from the fields of politics, academia, education and business. A thorough process has been followed, using best practices to eliminate bias, such as anonymising nominations (name blind) and removing names of employers and other organisations (such as charities) during the initial shortlisting and judging process. The judges were provided with full details of each shortlisted nominee including detailed contextual data, personal statements and a supporting statement from the nominator or referee. We are very grateful to all the judges for their support.



Andy Ratcliffe
CEO of Impetus
Private Equity Foundation



Nero Ughwujabo
Special Adviser to The Prime
Minister at 10 Downing Street,
on Social Justice, Young
People and Opportunities.
Former CEO of the Croydon
BME Forum



Claudine Adeyemi
Associate at Mishcon de Reya
LLP, Founder & CEO of The
Student Development Co.,
Founder of the Career Ear app



Owain Service
Managing Director of the
Behavioural Insights Team



Emran Mian
Director General (interim),
Higher Education and Further
Education at the Department of
Education. Former Director of
Strategy and Social Mobility at
the Department of Education



Rachael Millar
Interim Head of Secretariat at
the Social Mobility Commission



Professor Sir
Les Ebdon CBE DL

Former Vice-Chancellor of
the University of Bedfordshire
and Director of Fair Access to
Higher Education



Dame Rachel de Souza

Educationalist and former
Head Teacher, CEO of the
Inspiration Trust



Dr Louise Ashley
Senior Lecturer and social
mobility expert; specialist in
researching the implementation
and development of diversity
and inclusion programmes in
large, multinational professional
service firms



Zamila Bunglawala
Deputy Director - Strategy and
Insight, Race Disparity Unit, the
Cabinet Office

Our Hosts and Speakers

We are honoured to have several distinguished guests and speakers this evening.

Our Hosts:



Fatima Benkhalel

Fatima is an undergraduate student studying Electrical Engineering at King's College London. She is an upReach Associate and the first in her family to go to university. In 2017 she converted her Spring Insight Week at Bank of America Merrill Lynch into a Summer Internship in their Global Technology Division.



Reggie Nelson

Reggie graduated with an Economics degree and is now a Client Business and Investments Analyst at Legal and General Investment Management. He is also Chair of the ACCA Emerging Talent Advisory Group, a regular voice on BBC Radio, and a youth mentor. He has been described by the Prime Minister as a "persistent and inspiring young person".

Our Speakers:



Baroness Helena Kennedy QC

Baroness Kennedy, Patron of upReach, is one of the United Kingdom's most distinguished lawyers. She has practised at the Bar for 40 years in the field of criminal law and has conducted many of the leading cases in those years. She has championed law reform for women, especially relating to sexual and domestic violence. Baroness Kennedy was also the leading voice for equal opportunities in the legal profession for women. She has chaired the British Council and the UK Human Genetics Commission. She has been a member of the House of Lords since 1997, where she sat on the Joint Committee of Human Rights, and is chair of the EU Justice Sub-Committee.



Sasha Morgan

Sasha is Director of the Social Mobility Commission, and has held a number of roles in the cultural and policy sectors. She has worked as an adviser to No. 10, as a senior adviser for the Department of Communities and Local Government, and as Chief Operating Officer of the National Infrastructure Commission. Sasha is passionate about creative education and believes that the arts are an important tool to allow young people to unlock their potential. She currently oversees the education work of Bold Tendencies, an Arts Commissioning organisation based in Peckham.



Richard King

Richard is Co-Head of UK & Ireland Corporate & Investment Banking for Bank of America Merrill Lynch and is responsible for over 150 large corporate relationships at the firm. He has over 25 years experience in corporate and investment banking and joined Bank of America Merrill Lynch in 2010 from RBS. He is an upReach mentor.



Chris Millward

Chris is Director for Fair Access and Participation at the Office for Students, where his role is to ensure that universities and colleges are doing all they can to support underrepresented groups to access and succeed in higher education. Chris is an executive member of the Office for Students board.



John Craven

Chief Executive of upReach, John has been passionate about boosting social mobility since founding the successful Cambridge University Shadowing Scheme in 1999. He has been at upReach for three years, having formerly been a Director of Equity Markets at Merrill Lynch, a trustee of Get Connected, and a Lead Practitioner in teaching.

Recognising outstanding achievement in specific career sectors

Banking and Finance

Presented by **Hannah Stoddart**, upReach Banking and Finance Programme Leader



Oliver Craven Robinson, Exeter University

Having worked four jobs to fund his time at university, Oliver is now in his second year studying Economics & Finance at Exeter. He completed a spring internship at Bank of America Merrill Lynch earlier this year, and wishes to pursue a career in financial services. He is part of a society that promotes investing knowledge, wealth creation and networking across cultures and socio-economic backgrounds.



Fatima Benkhalel, King's College London

Fatima is an undergraduate student studying Electrical Engineering at King's College London. She is an upReach Associate and the first in her family to go to university. In 2017 she converted her Spring Insight Week at Bank of America Merrill Lynch into a Summer Internship in their Global Technology Division.



Suet Au, Warwick University

Suet is a Management and Finance undergraduate at Warwick University, currently on placement as an investment analyst at Aon. Alongside a career in investments and finance, she is passionate about promoting social mobility and gender equality within the workplace, and has worked with Code First: Girls.

Charity and the Third Sector

Presented by **Laura Harrison**, upReach Head of Programmes and Impact



Rochelle Watson, Kingston University

Rochelle is a Health, Social Care and Education student at Kingston University, having transferred there two months after having her son. Her lived experience encouraged her to develop an interest in social equality, and she aspires to promote wellbeing, diversity and inclusion. She volunteers regularly at Kingston Family Contact Centre.



Olivia Dunphy, Lancaster University

Olivia is a final year English Literature student at Lancaster University, and she aspires to work within the charity sector when she graduates. She currently works with Edmund Rice England, Intervol and Sexpression to develop her passion for children and women's rights.



Solomon Pervez, University College London

Solomon is a second year Biochemistry student at UCL. He learned English as a second language before achieving the highest GCSE results in his school, and he is the first in his family to go to university. He is now launching a mentoring scheme in his local area, Southall.

The Sector Awards

Sponsored by



Consulting

Presented by Anush Newman, Co-Founder & Managing Partner, JMAN Group



Jali Packer, Cambridge University

Jali is in his third year studying Psychological and Behavioural Sciences at Cambridge. He was Speakers Officer of the Cambridge Union, a Public Policy Analyst at the Wilberforce Society, and he has secured a graduate offer at McKinsey. He hopes to give something back to the cause of social mobility as an upReach Brand Ambassador this year.



Tom Burgess, Nottingham University

Tom is a final year Economics student at the University of Nottingham. He recently interned at Deloitte, and is due to join Deloitte's Strategy & Operation Consulting practice next September. He ran his University Consulting Group, and has mentored sixth form students through their university application process.



Joseph Chimento, Imperial College London

Joseph grew up in Leicestershire in a social mobility coldspot. His turning point was getting Ds in GCSE Chemistry, which he retook to achieve A*s; he is now a Chemical Engineering graduate at Imperial College London. He developed a consulting club website, and has secured a graduate role at Accenture.



Tolulope Akinboboye, King's College London

Tolulope studies Political Economy at King's College London. She set up a freelance makeup artistry business in sixth form, and has had over 200 clients. She founded the BAME in the City society, and has had work experience at 7 corporate firms.



JMAN Group is a technology-enabled management consultancy, working with organisations across all sectors. We specialise in empowering our clients to achieve better outcomes and evolve their business through data, analytics and information management. Whilst our approach is data-centric, we offer a broad toolkit to help clients create lasting change.



www.jmangroup.com

+44 207 205 4067

info@jmangroup.com

Creative Industries

Presented by Charlotte-Grace Rollinson, Project Manager, Imitor Graphica



Sahar Summer Bayer Goldsmiths, University of London

Sahar is a writer for GRM daily, a UK urban music and culture platform. She has experience in festival production, and has helped run focus groups for Wired4Music and Wigmore Hall. She is a trustee of the music charity Sound Connections. She is passionate about mental health, and has facilitated workshops alongside the Child and Adolescent Mental Health Service.

Engineering

Presented by Jackie Gregory, Student Opportunities & Skills Developer, University of Lancaster



Dean Grierson, Lancaster University

Dean is a second year Mechanical Engineering student at Lancaster University. He had no exposure to engineering growing up, but has gone the extra mile to develop both soft and hard skills at university and beyond. He joined a local IMechE panel, and set up and ran an Institute of Engineering & Technology group in Lancaster.

Government, Politics and the Public Sector

Presented by Ryan Shorthouse, Founder and Chief Executive of Bright Blue



Josh Collier, York University

Josh is from a single-parent family and studies History at York. He was Head Boy, as well as Sixth Form Student of the Year. He is aiming to go into the Public Sector, and interned in the Foreign Office through the Civil Service Fast Stream over the summer.



Andrew Harding, Leeds University

Andy joined upReach in 2016, and spent time volunteering to provide pupils with high-quality career coaching. At university, he worked with the Society Committee as Marketing Officer, and gained a place on the Teach First Leadership Development Programme.



Bonnie-Ruth Samuyiwa, Cambridge University

Bonnie-Ruth believes very strongly in giving back to the local community and supporting the next generation. Alongside her degree, she is developing a social enterprise which will encourage young people to express themselves through the medium of storytelling.



Tara O'Reilly, University of London Institutes

Having self-taught her A-Levels, Tara is completing a law degree as a mature student, alongside a full-time job in Parliament. She is a trustee of the human rights charity Peace Brigades International UK, leading on advocacy and communications. She also set up a coding club for women in Westminster, and seeks to use her skills and networks to lift other women up.

The Sector Awards

Sponsored by

ALLEN & OVERY

Law

Presented by Kate Cavelle, Head of Pro Bono & Community Investment, Allen & Overy



Rajib Lama, Queen Mary, University of London

Rajib is a Business with Law student at Queen Mary, University of London. While at King's College London, he led the Lawyers Without Borders Society and the KCL Law Society. He is determined to leverage his skills, pursuits and work experience to become a successful commercial solicitor.



Tumi Adebimpe, Exeter University

From Council Estate to Canary Wharf: Tumi is a LLB Law with Maîtrise en Droit student at the University of Exeter, and future Trainee at Clifford Chance. She is a blogger, poet, and grateful opportunist.



Annalisa Mensah, York University

Annalisa moved to England at 8 years old, and completed her GCSEs at a low-achieving school. She is now studying for a Master's, sponsored by a law firm with whom she will commence training in 2020. She set up The Power Network to equip 16 and 17 year old girls with the tools to achieve all their academic goals.

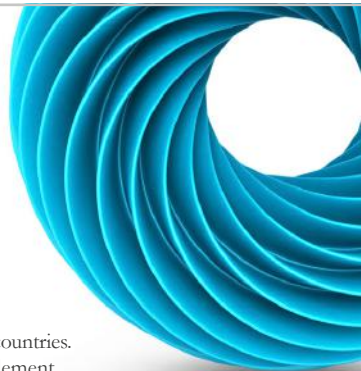


Bethany Drew, Bristol University

Bethany is a final year law student at the University of Bristol, and she is Vice-President of The 93% Club, a state school society. Since the start of university, she has been a Pathways to Law Mentor, mentoring A-Level students through their journey to University. During the summer, she secured a training contract with TLT LLP.

A law firm with global reach. *And local depth.*

Allen & Overy is a truly global law practice. Our people work in 44 offices across 31 countries. It's an international network that helps the world's most successful businesses implement their strategies on a global stage. The fact that our lawyers are based on the ground in every region means that we can combine our global reach with in-depth local knowledge. Which means we can keep our clients up to speed with local legislative and regulatory developments as soon as they occur, as well as providing the global perspective that makes us such experts in the field of cross-border work. In short, we're an international practice of local experts.



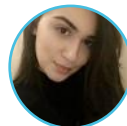
Professional Services

Presented by Naomi Fearnett, Student Recruitment, PwC



Daniel Robinson,
King's College London

Originally from Liverpool, Daniel moved to London to pursue a Chemistry degree at King's College London. He joined KPMG's Technology Consulting graduate scheme, where he helps advise clients on how to understand and mitigate their cyber risk.



Faryaal Aziz,
Warwick University

Faryaal completed her GCSEs and A Levels at underfunded comprehensive schools in the West Midlands. Despite her situation at school and financial difficulties, she achieved top grades in all her subjects. She first got experience at a Big Four professional services firm aged sixteen, and she is currently on a scholarship studying Law at Warwick University.

Retail and Consumer Goods

Presented by Mikayla Henry, upReach Alumna, Trustee & Senior Policy Advisor to HM Government



Quinn Leatherbarrow-Stokes,
Exeter University

Quinn is a student at Exeter University, currently on placement at GlaxoSmithKline. He has been an upReach Associate for 2 years, and has served as Marketing Manager of the Exeter upReach Society. He is the process of starting up a business to remove the risks students face with housing, called Hex Exeter.



Ashwinnie Thushyanthan,
Southampton University

Ashwinnie is a final year undergraduate studying Fashion Management and Marketing at the University of Southampton. She has worked for brands such as Tom Ford, Erdem and Roberto Cavalli. She is passionate about widening participation to the creative industries, and is a Saturday Club Ambassador at the Winchester School of Art

The Sector Awards

Science and Technology

Presented by Reggie Nelson, Investments Analyst at Legal and General Investment Management



Uzair Baz,
Birmingham University

Uzair is studying for an MSc in Computer Science, and holds a BEng Chemical Engineering degree. Having interned at Google, he uses his experiences to help other students. He is a self-taught calligraphy artist and, inspired by his role as Islamic Society Marketing Officer, founded the Calligraphy Society at university.



Jordan Pearson,
Manchester Metropolitan University

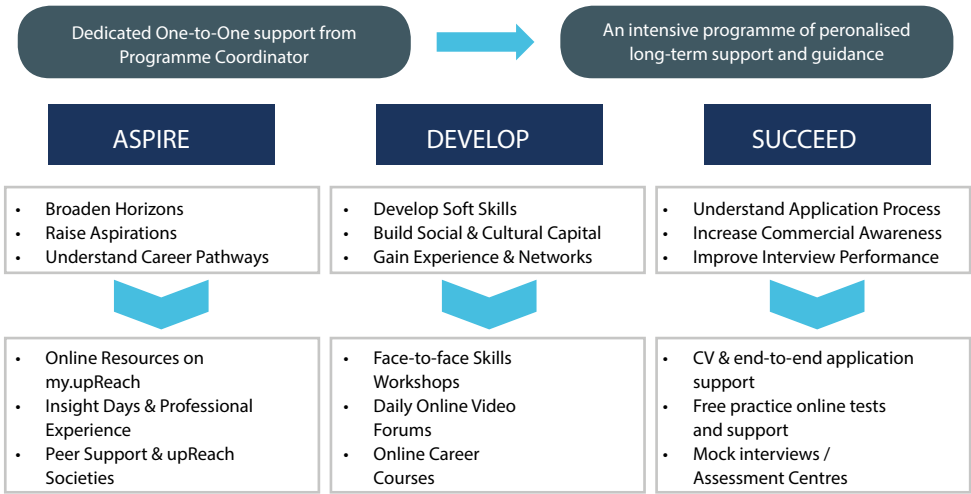
The first in her family to go to university, Jordan is a motivated and enthusiastic individual who graduated with a First Class Honours Degree. She works for IBM as a Watson AI and Data Platforms consultant, and aims to inspire other people from a similar background to pursue a career in STEM. She has mentored university students, high school students and peers.



Fatima Mahmood,
Queen Mary,
University of London

Fatima is studying for a Master's in Physics with ambitions to pursue a career in Medical Physics. She has previously presented her work at the prestigious British Conference for Undergraduate Research, and received a British Council scholarship to study Chinese in Beijing while carrying out an international work experience placement

How do upReach support students?



Best Mentor

Recognising an individual who has made a significant contribution to improving the employability of students from less-advantaged backgrounds.

Presented by Richard King, Managing Director, Bank of America Merrill Lynch



Emma Dickson, PwC

Emma is a University of Oxford History graduate from South London. She has worked as a management consultant for over seven years. She has shared her professional and life experiences with many talented mentees over the years, providing ongoing support and coaching and building great relationships along the way.



Geraldine Clement, Ministry of Justice

Geraldine grew up in deprived circumstances: mixed race heritage, low socio-economic background, parental break-up and death whilst she was a child. She had talent and aspirations but no one to articulate her feelings with. She mentors young people from similar backgrounds in the hope that she can be the adult who enables them to fly.



Mona Vadhwa, City University

Mona is an employability professional who heads up the employer engagement team at City. She believes that mentoring is the power of human connection, and it allows her to share her knowledge and skills, and provide support to facilitate success. She has enjoyed seeing her mentees develop their confidence, grow as individuals and go on to lead successful careers.



upReach Associates are supported by over 250 mentors, mostly from our 24 partner employers. To find out more, visit www.upreach.org.uk/get-involved/

Biggest Champion of Social Mobility

This award is to recognise three students who have used their own experience to make a significant contribution to tackling social mobility. This could involve speaking at events, supporting their University Widening Participation department, or setting up initiatives in their own time to improve social mobility.

Presented by by Jessica Oghenegweke, Social Mobility Commissioner and Project Coordinator at the Diana Award



Victoria Azubuike, Warwick University

Victoria is a Management student at Warwick University. In 2016, she founded the Us Programme, to help educate and inspire young women from disadvantaged backgrounds to break boundaries and achieve goals. She curates conferences that bring together women from similar backgrounds, helping them to succeed in their chosen careers.



Ellie Wood, Cambridge University

A working class, first generation student, Ellie was heavily involved in access work during her time at Cambridge, including the CUSU Class Act campaign for working class students. Since graduating, she has been working as Schools Liaison Officer at Trinity College, Cambridge.



Lily-Rose Sharry, Cambridge University

Lily-Rose is the Care Leaver and Estranged Students Officer for Cambridge University. She has been meeting with fellow care leavers and estranged students to discuss ways to improve university support, and will be sharing this information with the Pro Vice-Chancellor.



Liberty O'Hagan, Bristol University

Liberty is a First Generation student who attended a special measures primary school. She is currently President of Bristol University's State School Society, which provides academic and career support to students. In 2017, she was also in the top 10% of her year.



Biggest Champion of Social Mobility



Desmond Asante, Oxford University

Desmond is studying Mathematics and Statistics at St Peter's College, Oxford. He was born in Ghana and came to the UK aged 10, and was raised by a single parent. He completed his GCSEs in Ghana, went on to college in Hackney and finally gained admission into Oxford. His interests are volunteering and mathematics, and he tries to combine the two.



Zeynab Alwi, Oxford University

Whilst studying at Oxford University, Zeynab's commitment to improving access to higher education prompted her to launch a social media campaign to encourage applications from underrepresented students. She also became Oxford First-Generation Students Vice President, and founded a magazine to platform the creative talent of BAME students.



Tom Gardiner, Oxford University

Tom is a medical student at Oxford University. Over the last five years he has worked with the university and several charities to improve access opportunities for pupils from disadvantaged backgrounds. Passionate about early intervention, he is also a school governor and trustee of a psychological behaviour charity.



Highest Impact Employer Initiative

Recognising an employer initiative that has had the highest impact on social mobility. Students were invited to make nominations, with the winner selected using an “employer name-blind” vote by upReach Associates.

Presented by Mayurika Ganesalingam, upReach Associate and student at the University of Edinburgh



Lloyds Scholar Scheme



Companies House

Government Communication Service
Diversity Internship Scheme



upReach Banking and
Finance Springboard



PwC Social Mobility
Action Plan

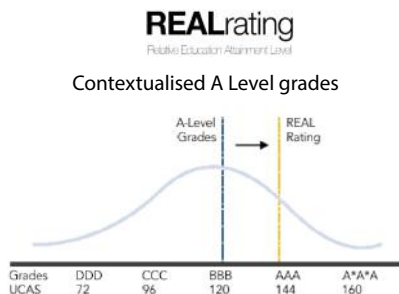


upReach Professional
Experience Week

Contextualising Academic Performance

“A Level grades can only be considered to be a robust measure of potential if they are considered alongside the context in which they are achieved”

Chris Millward, Director for Fair Access and Participation, Office for Students



A free, sophisticated contextualisation platform for graduate employers

1. Research-backed algorithm based on 14 indicators of socio-economic disadvantage
2. Single net indicator of overall disadvantage
3. Connect to hidden talent that you may otherwise miss

Visit www.realrating.co.uk to find out more.

Partnerships with upReach

Employers typically partner with us to support their wider diversity objectives. upReach help top graduate employers create the conditions for a more diverse workforce to thrive within their organisation. Our Partner Employers host Insight Days, provide mentors and professional work experience opportunities, and take care to ensure their recruitment processes are fair.

To find out more, email partnerships@upreach.org.uk

upReach Recruitment Partnerships

Boost social diversity of early careers intake

Build lasting relationships with students and engage employees

Pre-identify and convert high potential candidates



Attraction



Insight Day



Professional Experience



Application Support



Mentoring



Exclusive Internships



Careers Academy

"We are proud to be a founding partner with upReach and over the last 5 years have worked together to offer 52 upReach Associates Graduate jobs. It is clear to see upReach's support helps advance our commitment to improving social mobility" Leah Knapton, Assessment, Selection and Programmes Manager, Deloitte

Corporate Social Responsibility



Springboard Sponsorship

55/92 (60%) Associates on our Banking & Finance Springboard secured offers in the sector in 2017/18



Charity of the Year

Improving employee engagement and creating learning opportunities through CoY activities, while funding upReach's growth



Bespoke Programmes

Connecting existing outreach work to long-term objectives, tracking outcomes and measuring impact



Mentoring Programme

Broadens students' horizons and provides a valuable two-way learning opportunity

Our Partners Include:



McKinsey&Company

NOMURA



northhighland
SPECIALIST CONSULTING



Highest Impact University Initiative

Recognising a university initiative that has improved the future prospects and/or employability skills of students from less-advantaged backgrounds. Nominations were made by students, followed by a "name-blind" vote by upReach Associates.

Presented by Stephanie Lieber, upReach University Partnerships Manager



Access to Internships



GO Wales - achieve through work experience



UNIVERSITY OF LEEDS

Leeds University Business School

Nurturing Talent Mentor Scheme



CITY UNIVERSITY LONDON

The Micro-Placements Programme



UNIVERSITY OF LEEDS

Access to Leeds

UNIVERSITY OF WESTMINSTER

Westminster Working Cultures

Encouraging Students to Engage with their Employability

upReach's Graduate Employability Framework (GEF)

Created in 2015 with our partners and developed with the support of the upReach Advisory Board.

10 categories - 5 levels for each



- getEmployable, upReach's leading careers and employability platform, can be licensed by universities.
- Students complete a 50 question baseline assessment, receiving a detailed Personal Employability Report and action plan.
- Activities and interventions are mapped to the GEF (opposite), allowing students to self-select online based on need, or be targeted for support.
- Annual reassessments demonstrate progress and in aggregate can be used to compare cohorts or assess impact.

Visit getEmployable.org to find out more

Closing the Progression Gap at University

An employability skills gap exists whereby freshers from less-advantaged backgrounds are less likely than others to have:



Access to professional networks



Knowledge of professional careers



Relevant work experience



Understanding of the graduate recruitment game.



Previous opportunities to participate in extra-curricular activities that help build key employability skills

They are also less likely to engage early in careers services at university, meaning the employability skills gap can widen.

The Progression Gap

Without intervention, it is no surprise that a progression gap exists, whereby less-advantaged students are less likely to get a highly-skilled graduate job than others on their course, and earn 10% less according to recent IFS research. At some prestigious graduate employers, up to 70% of graduate hires are from private or grammar schools that educate just 11% of the population.

Partnering with upReach

upReach work in close partnership with universities to help them achieve their progression goals. Strong partnerships with Widening Participation and Careers Services are crucial to our success. Specifically, upReach's comprehensive programme of professional development helps universities increase the proportion of students from a WP background that secure internships and graduate jobs. Our latest Impact Report will be published in January 2019.

upReach Associates are at 53 universities. Our current partners include:



The upReach Ten

The ten students who have achieved, or have the highest potential to achieve, outstanding success academically, professionally and/or personally. This might be demonstrated by resilience, determination or initiative, participation in work experience or internship programmes, by the attainment of significant leadership roles at University (and using those roles to great effect), or by efforts made to boost employability in unique and innovative ways.

The upReach Ten was selected by our judges from the shortlists for all other awards, plus this additional, longer shortlist of non-career specific nominations.

Sponsored by



Presented by Professor Sir Les Ebdon CBE DL, Former Vice-Chancellor of the University of Bedfordshire and Director of Fair Access to Higher Education



Sophie Tew, Leeds University

Alongside studying English and Social Policy at the University of Leeds, Sophie is President of Women In Leadership, an award-winning society with over 1000 members. She is also a Research Scholar in social mobility, and produces a podcast about grief.



Kingstun Nelson, Birmingham University

After an exchange year at the University of Hong Kong, Kingstun returned to the University of Birmingham to complete his BSc in Sport and Exercise Science. Kingstun is committed to being a positive role model by raising over £4,000 for charities, and acting as a mentor for young people who face the challenges he has overcome. He has secured a graduate role at Lloyds Bank.



Danyaal Sabir, Lancaster University

Despite taking 18 months out of university for health reasons, Danyaal has taken every opportunity to develop and help others. He has represented his university internationally, raised thousands for charity, and continues to work on projects in his local community.



Renee Kapuku, Oxford University

Renee is currently a student at the Harvard Graduate School of Education. During her time at Oxford, she was elected as her college's first BME representative, and she worked with the Campaign for Racial Equality. She has partnered with Goldman Sachs, Linklaters and Teach First, touring schools across London to deliver workshops for students of African and Caribbean heritage.



info@imitorgraphica.com

imitorgraphica.com

• DOCUMENT FORMATTING •

• GRAPHIC DESIGN •

• SLIDE TRANSFORMATION •





Kamal Deris, Warwick University

Kamal's life turned around when he came to the UK at the age of 14, from not being able to read English, to now studying Engineering at the University of Warwick. He is president of the Gliding Club, and is undertaking a Global Sales placement at Finastra.



Deanne Clarke, Oxford University

Despite her socio-economic status and several bereavements, Deanne has been academically successful and selected for competitive internships and student programs, most recently abroad in China and Saudi Arabia. She is currently working on a Master's project investigating Virtual Reality applications in chemical education.



Daniel Malikzade Afshar, University of St. Andrews

The first generation of his family to continue in education past the age of 15, Daniel is studying Theoretical Physics at the University of St. Andrews. Having been on the brink of expulsion from school, he has now earned a summer internship at Deutsche Bank.



Yasmin Reid-Linfoot, Cambridge University

Yasmin is a second year student studying Psychological and Behavioural Sciences at the University of Cambridge, where she achieved the highest result in her first year. Outside of her studies, she is Mentor Communications Officer for Project Access, has mentored students, and spoken at outreach events.



Uniqua Brown, Aston University

Uniqua is balancing part-time employment, full-time study, two professional internships and an industrial placement as a young, single parent. With hard work, perseverance and careers guidance, she is now breaking the cycle of poverty, and turning her dreams into reality.

Are you an undergraduate eligible for upReach's support?

upReach provide a free, comprehensive programme to help you achieve your career ambitions, including:

- Personalised support from a dedicated Programme Coordinator
- Expert CV and Application Reviews
- Mock Interviews and Assessment Centres
- Exclusive opportunities with top employers
- Online platform to boost your career knowledge and commercial awareness
- Our Associates have secured roles at 55 'Times Top 100' firms.
- Average salary over £5,500 more than the average graduate (2016).

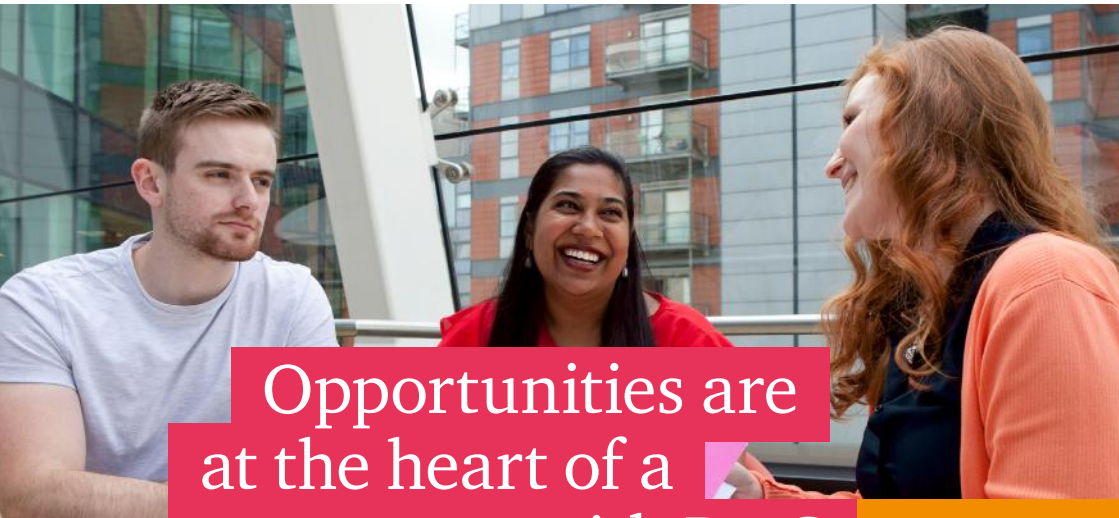
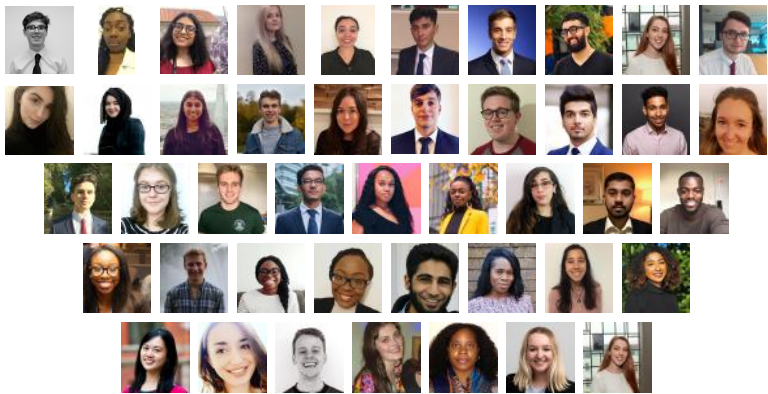


Find out if you are eligible and apply now at
www.upreach.org.uk/apply-now/

The Outstanding Achievement Award

This award will be announced on the night, and will go to the winner of the upReach ten: the student the judges believe to have achieved the most.

Presented by Hollie Crompton, Social Mobility Operations Lead, PwC



Opportunities are
at the heart of a
career with PwC



We have graduate and undergraduate opportunities in Assurance, Actuarial, Consulting, Deals, Legal, Tax or Technology. To find out more, visit pwc.co.uk/careers

© 2018 PricewaterhouseCoopers LLP. All rights reserved.

Thank you

upReach would like to thank everyone involved for their generous support of the Student Social Mobility Awards, without which the event would not have been possible. Our Sponsors and Supporters have not only covered the costs of hosting the event in full, but have also helped to ensure that nominees from all over the UK have been able to attend at no cost, with their travel expenses refunded.

In particular we would like to thank:

Platinum Partner **Bank of America
Merrill Lynch** 

Gold Sponsor 

Silver Sponsors **ALLEN & OVERY**
JMAN|Group 

Bronze Sponsor 

The upReach Development Advisory Board

Event Supporters

Alexander Wenk
Alexandra Willis
Charlotte Rollinson
Ozkan Koyun, Legal & General IM
Sir Ivor and Lady Crewe
University College, Oxford

Do you want to make a difference to social mobility?

upReach have ambitious plans to grow our impact. With your help, we can support 2,500 students per year by 2022. If you're interested to know more about our 2022 Strategy, please get in touch.

1 Become an upReach Member

2 Connect us to your employer or university

3 Fundraise for upReach

4 Apply to be an upReach mentor

5 Create a scholarship or join our Development Advisory Board

6 Find out about becoming an upReach trustee

To find out more, visit www.upreach.org.uk/get-involved
or email alexandra.pugh@upreach.org.uk

Nominees

200+

Nominations

33

Universities

The Shortlist

58%

Female

70%

Eligible for
free school
meals

77%

Parents did
not attend
university

33%

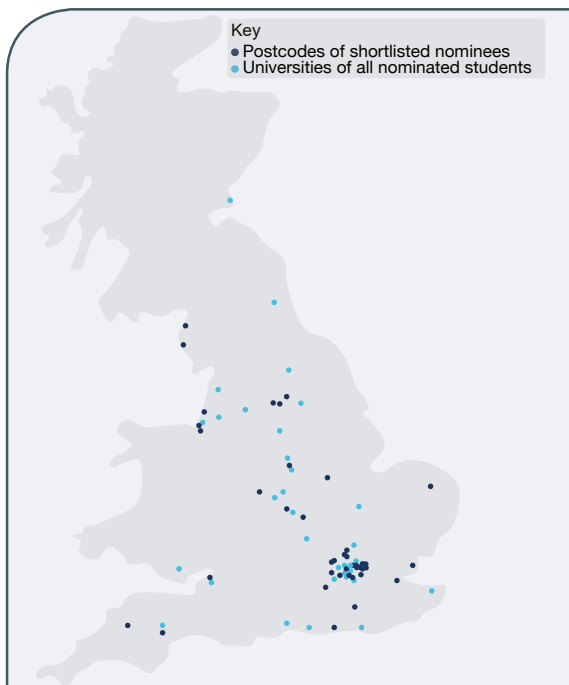
POLAR3
Quintiles 1-2

47%

Ind of Mult
Deprivation
Deciles 1-3

28%

School
Performance
Deciles 1-3



Support Social Mobility by becoming an upReach Member

- *Biannual Member Newsletter tracking upReach's progress*
- *Invitations to exclusive events and launches*
- *Minimum monthly direct debit of £3 per month*

To join or find out more visit
www.upReach.org.uk/member/

upReach

Supporting less-advantaged undergraduates to secure top graduate jobs

www.upreach.org.uk